



FOUNDATION FOR
ADVANCING ALCOHOL
RESPONSIBILITY



DRUNK DRIVING
FATALITIES



2016 State of

Drunk Driving Fatalities

IN AMERICA

BOARD OF DIRECTORS

Bacardi U.S.A., Inc.

Beam Suntory Inc.

Brown-Forman

Constellation Brands, Inc.

DIAGEO

Edrington

Mast-Jägermeister US, Inc.

Hood River Distillers, Inc.

Pernod Ricard USA

NATIONAL ADVISORY BOARD

The Honorable Thurbert E. Baker

Partner, Dentons US

Former Georgia Attorney General

Steven Casstevens

Chief of Police, Buffalo Grove, Illinois

2nd Vice President of the IACP

Charles G. Curie

Principal, The Curie Group, LLC

Former Administrator, Substance Abuse
and Mental Health Services Administration

Jeannette Kaplun

Chief Executive Officer, Hispana Global

TV host and author

Deborah Gilboa, M.D.

Clinical Associate Professor at University
of Pittsburgh, School of Medicine

Parenting and Youth Development Expert

Lisa Graham Keegan

Principal, Keegan Company

Former Superintendent of Public Instruction
State of Arizona

Robin Roberts

Co-founder and President,

National Media Group

Dean Wilkerson, JD, MBA, CAE

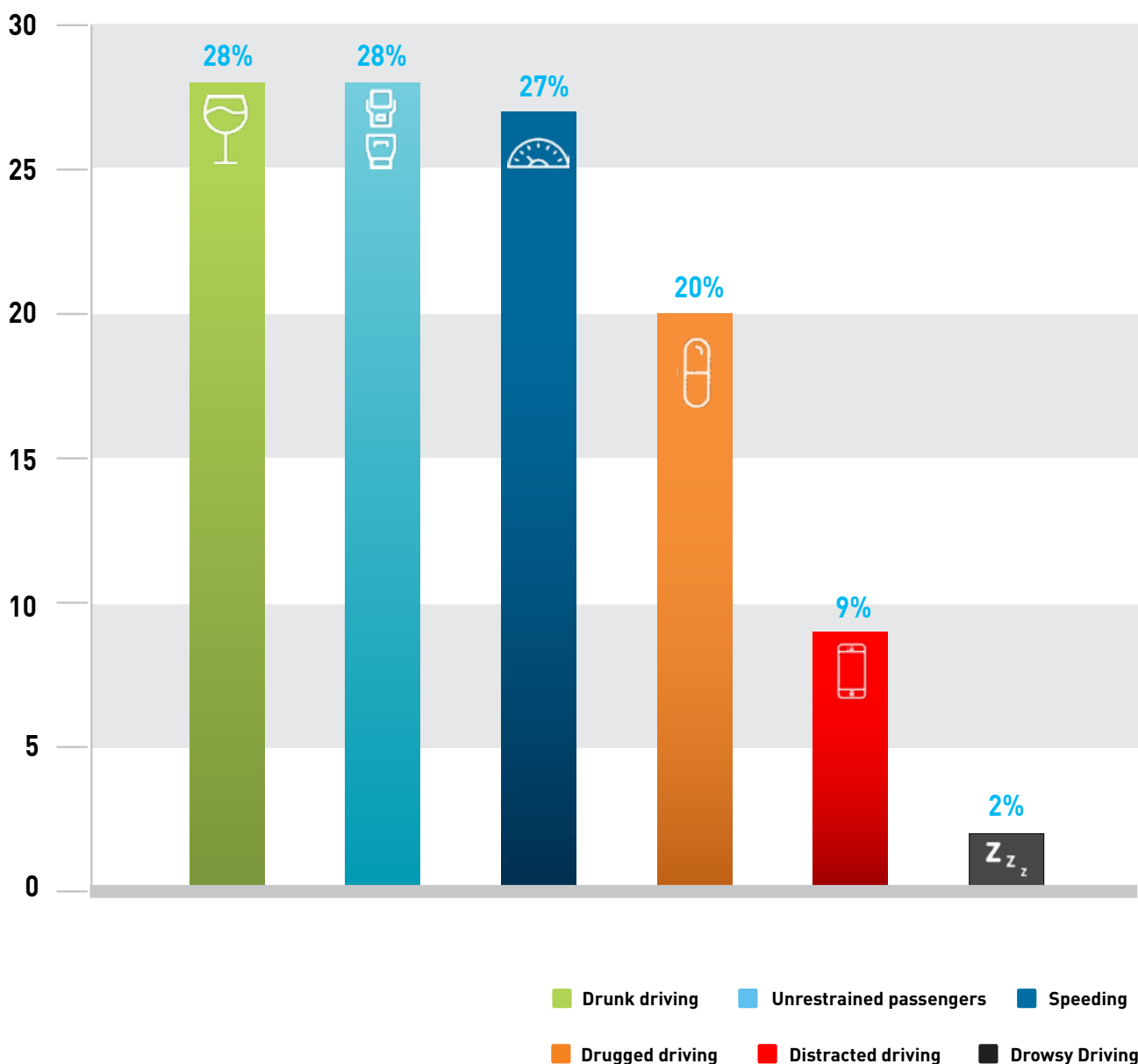
Executive Director, American College of
Emergency Physicians

Fatal Motor Vehicle Crashes in 2016 Included a Variety of Factors



FOUNDATION FOR
ADVANCING ALCOHOL
RESPONSIBILITY

Drunk, drugged, distracted, drowsy, or a combination are forms of impaired driving and are dangerous and preventable.



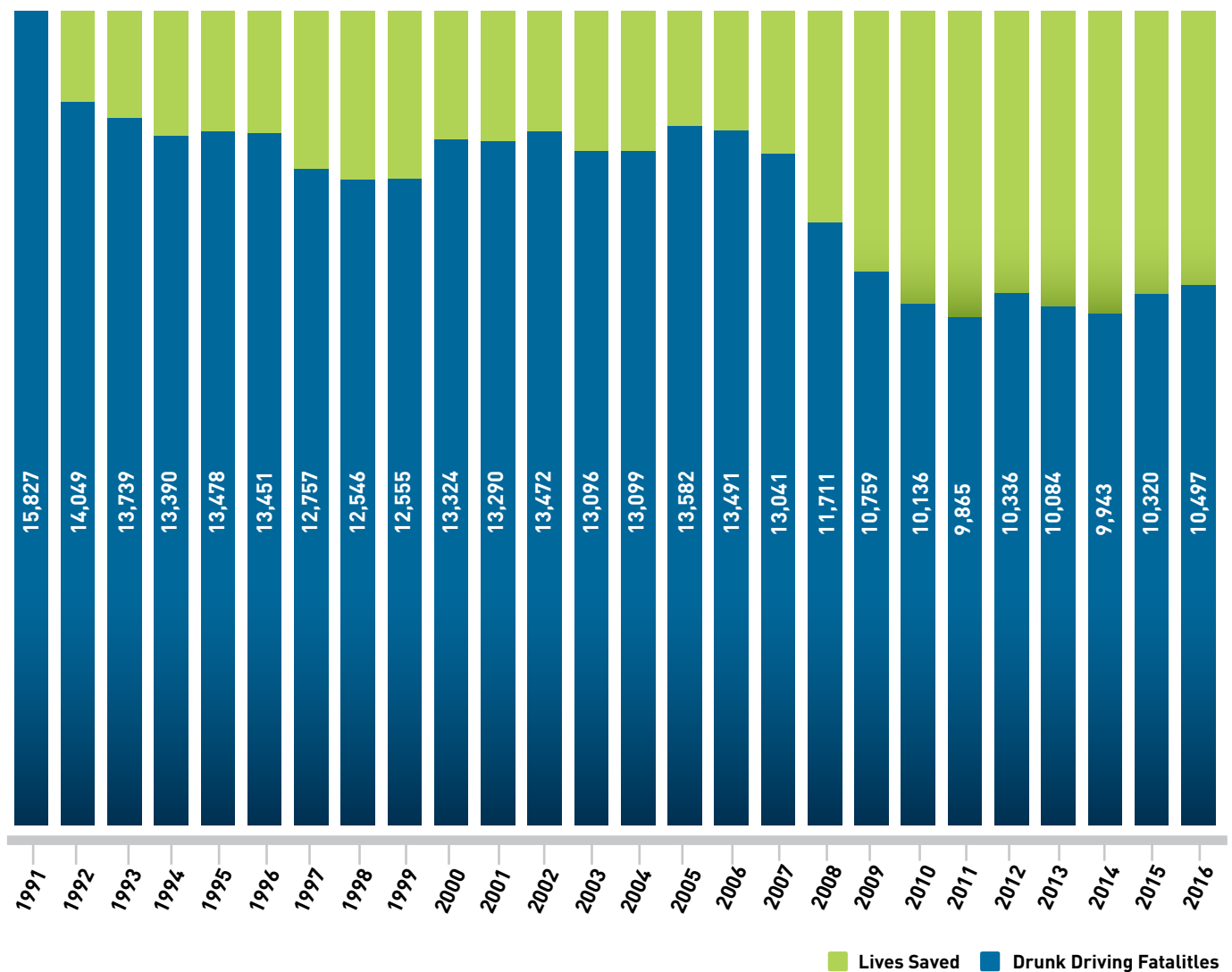
Source: NHTSA, FARS, 10/17

Saving Lives for Over 25 Years



FOUNDATION FOR
ADVANCING ALCOHOL
RESPONSIBILITY

Since the inception of
Responsibility.org in 1991, nearly
90,000 lives have been saved.



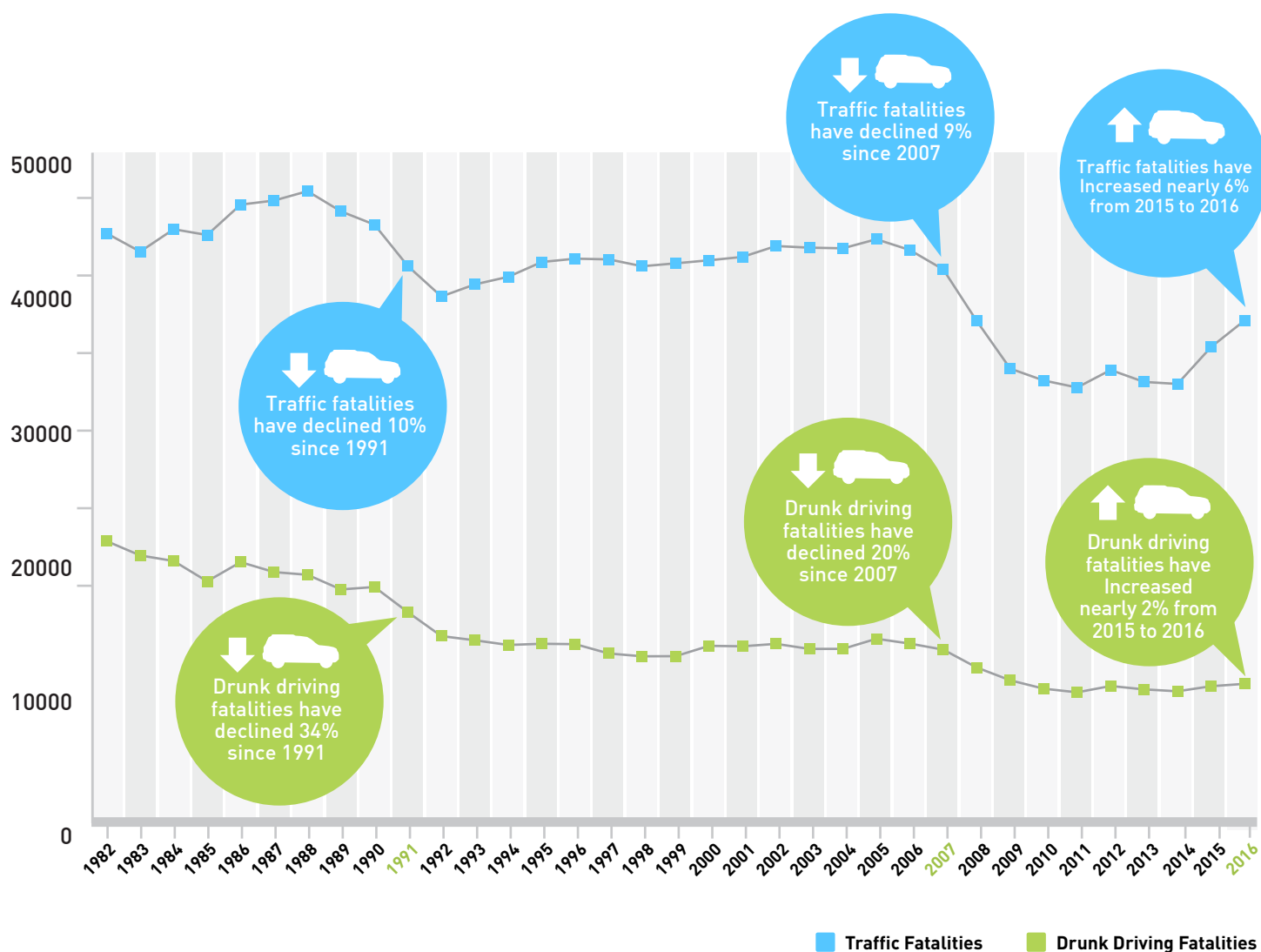
Source: NHTSA, FARS, 10/17

Motor Vehicle Fatalities: 1982-2016



FOUNDATION FOR
ADVANCING ALCOHOL
RESPONSIBILITY

Drunk driving fatalities are descending at a faster rate than total motor vehicle fatalities.



Source: NHTSA, FARS, 10/17

Percent of 2016 Driving Fatalities by BAC Test Result

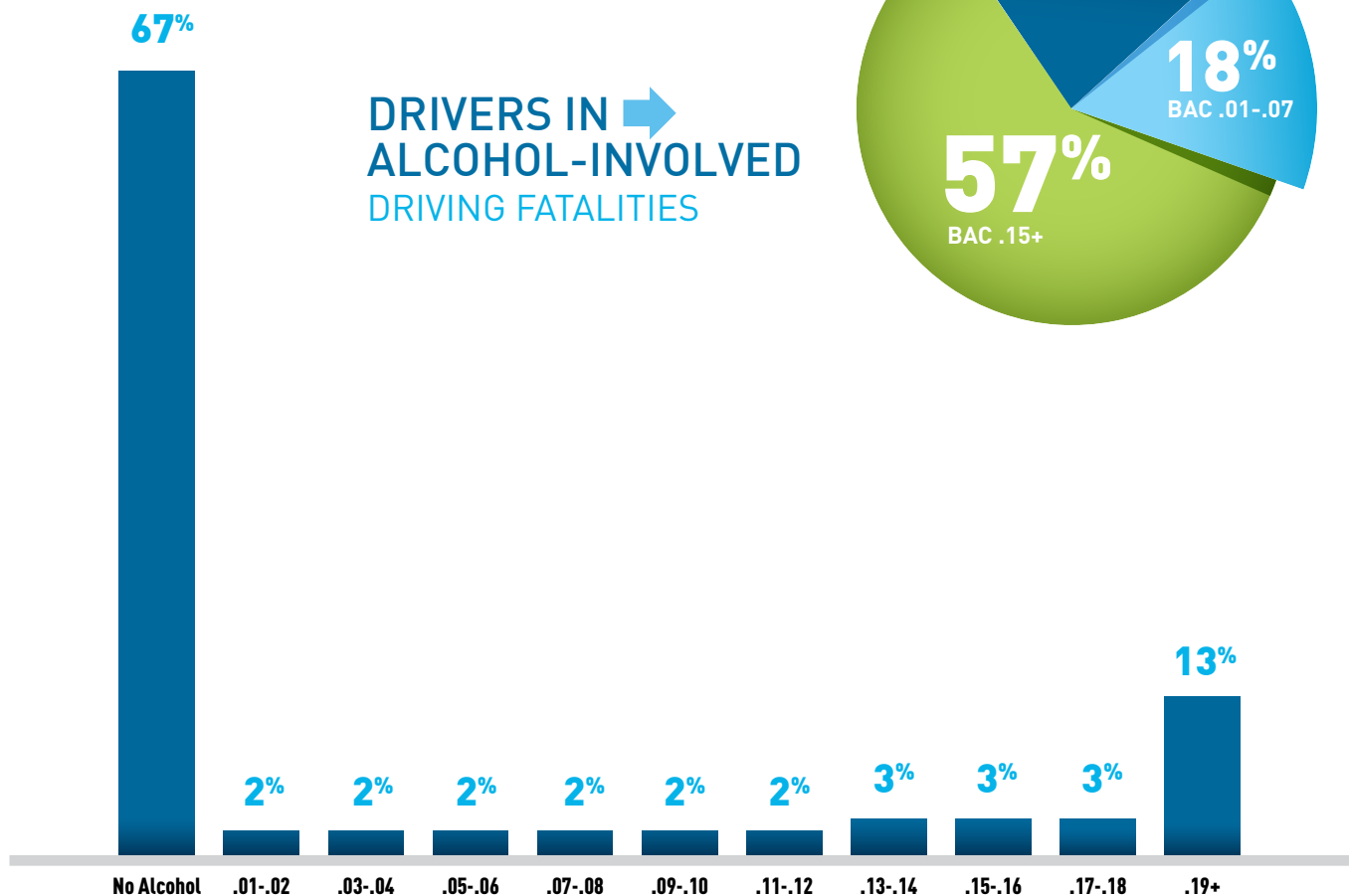
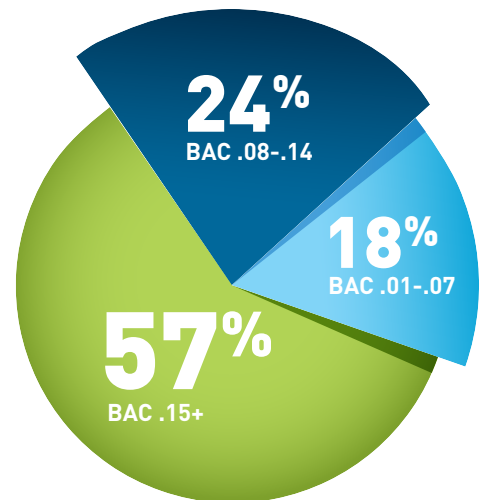


FOUNDATION FOR
ADVANCING ALCOHOL
RESPONSIBILITY

In 2016, drunk driving accounted for 28% of all traffic fatalities. Nearly sixty percent of alcohol-involved fatal crashes involved high BAC drivers.

67%

DRIVERS IN
ALCOHOL-INVOLVED
DRIVING FATALITIES



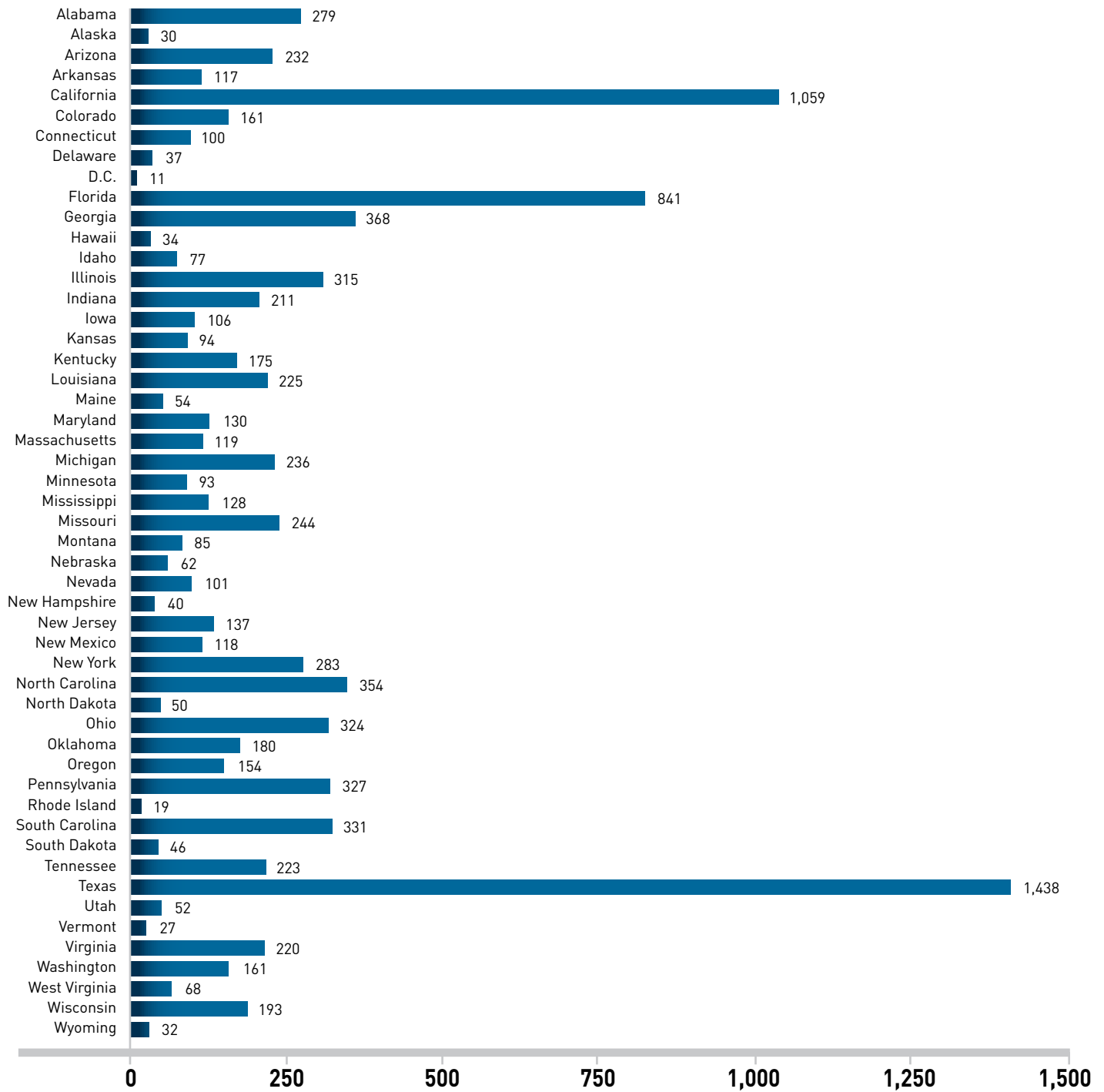
↑ KNOWN ALCOHOL TEST RESULTS OF
DRIVERS INVOLVED IN FATAL TRAFFIC CRASHES

Source: NHTSA, FARS ARF of Drivers with Known BAC, 10/17
Total may not equal the sum of categories due to rounding.

Alcohol-Impaired Driving Fatality Data 2016



FOUNDATION FOR
ADVANCING ALCOHOL
RESPONSIBILITY



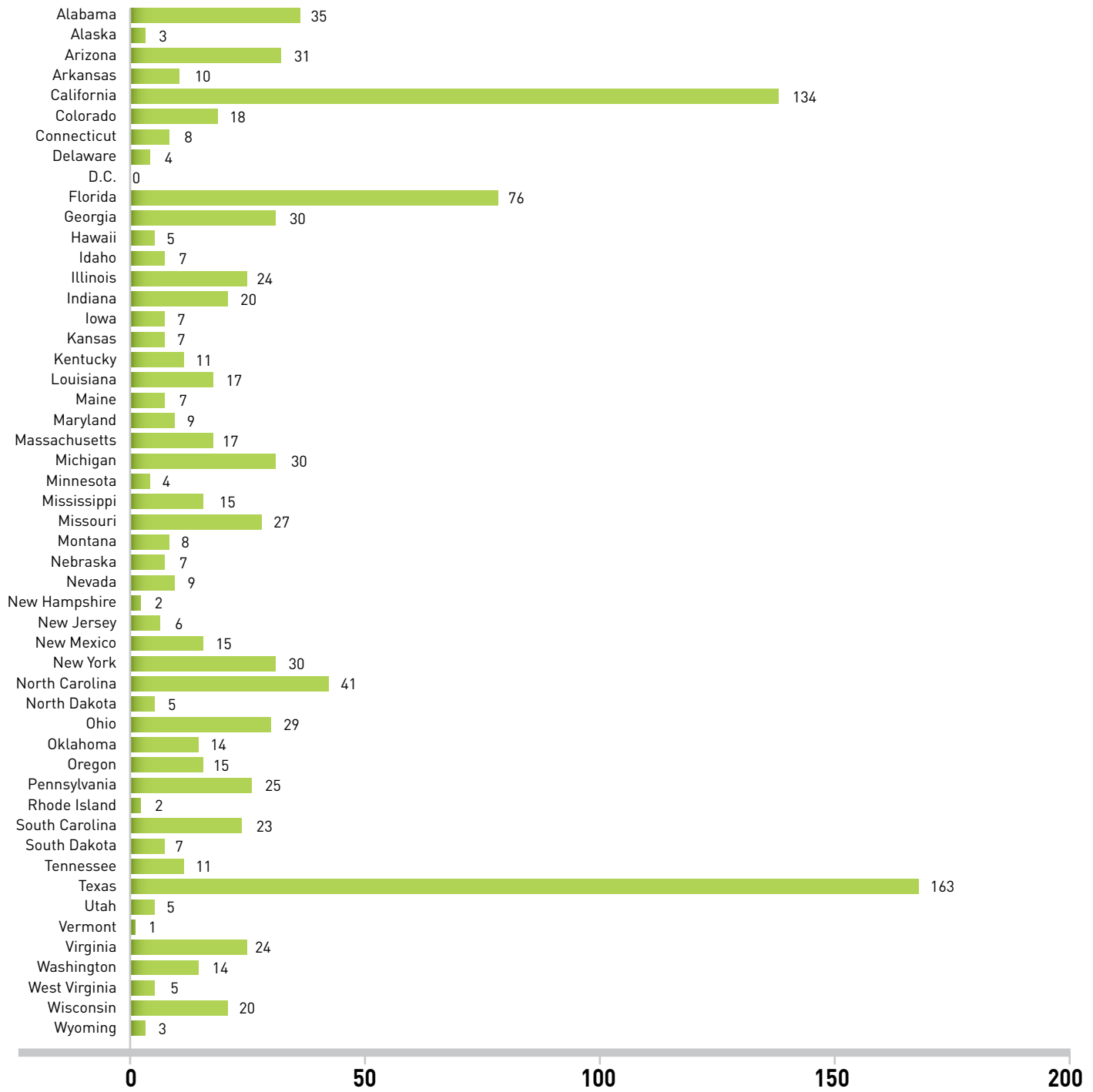
Source: NHTSA, FARS, 10/17
Total may not equal sum of the states due to rounding.

US TOTAL 10,497

Under 21 Alcohol-Impaired Driving Fatality Data 2016



FOUNDATION FOR
ADVANCING ALCOHOL
RESPONSIBILITY



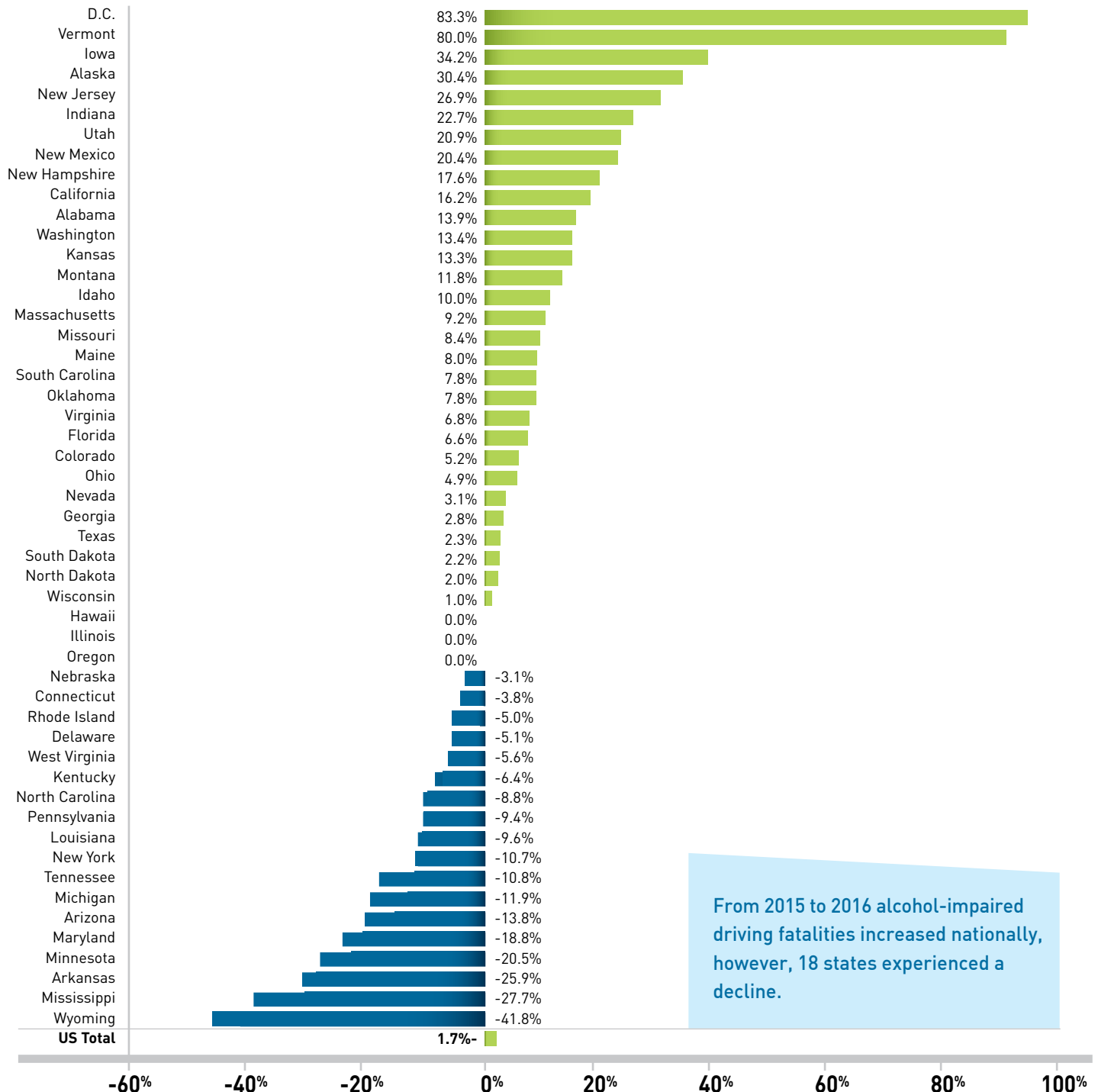
Source: NHTSA, FARS, 10/17
Total may not equal sum of the states due to rounding.

US TOTAL 1,031

Percent Change in Alcohol-Impaired Driving Fatalities from 2015 to 2016



FOUNDATION FOR
ADVANCING ALCOHOL
RESPONSIBILITY

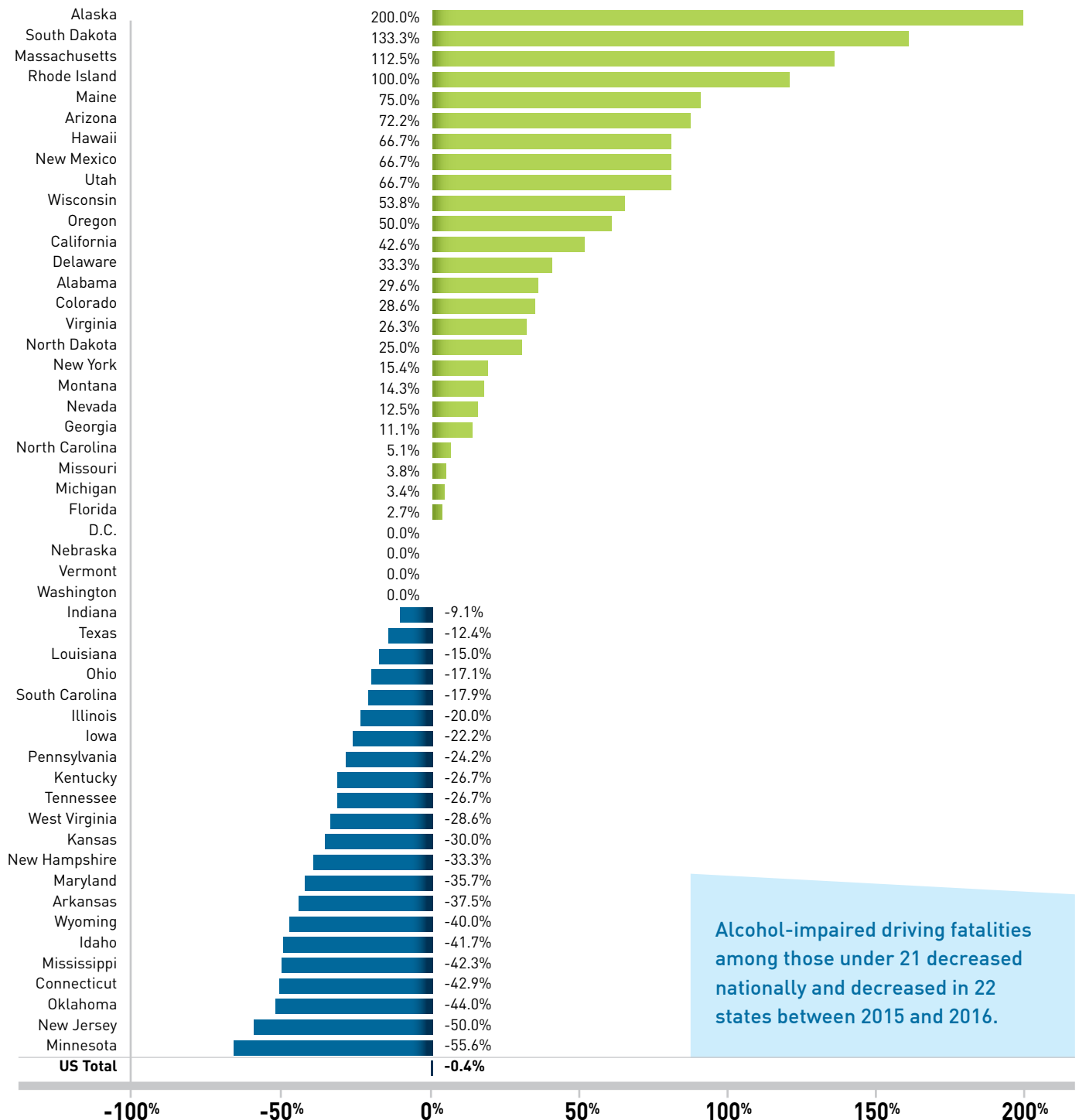


Source: NHTSA, FARS, 10/17

Under 21 Percent Change in Alcohol-Impaired Driving Fatalities from 2015 to 2016



FOUNDATION FOR
ADVANCING ALCOHOL
RESPONSIBILITY



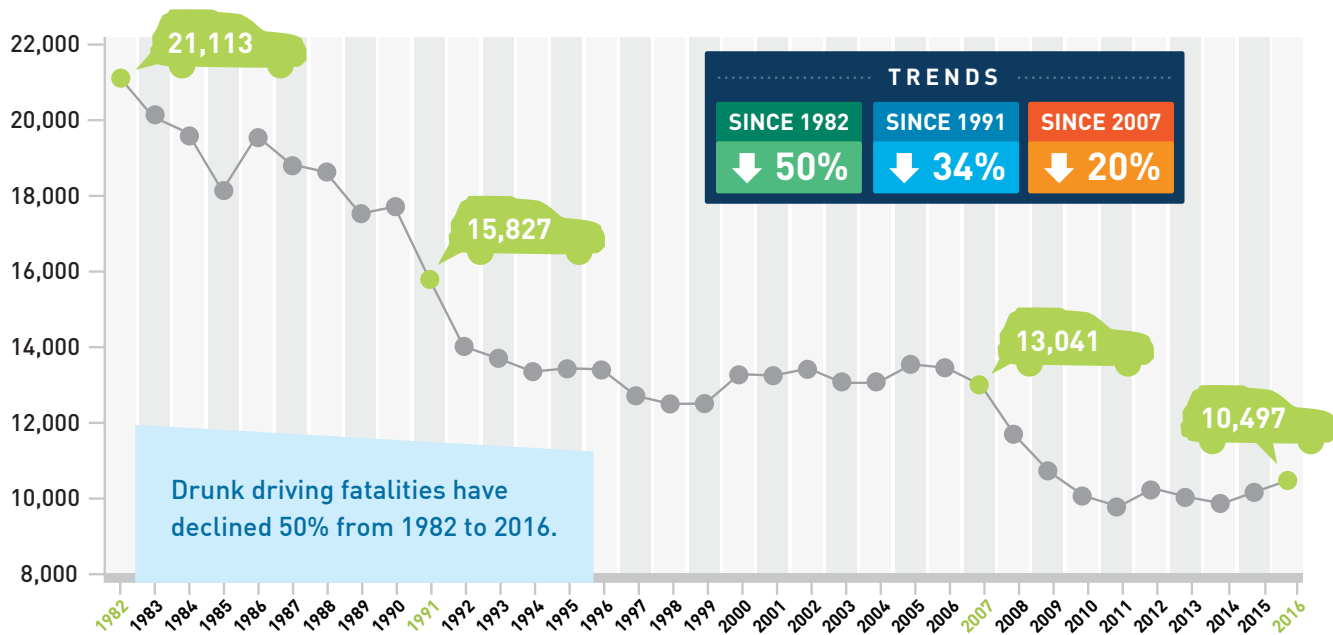
Source: NHTSA, FARS, 10/17

Alcohol-Impaired Driving Fatalities 1982-2016

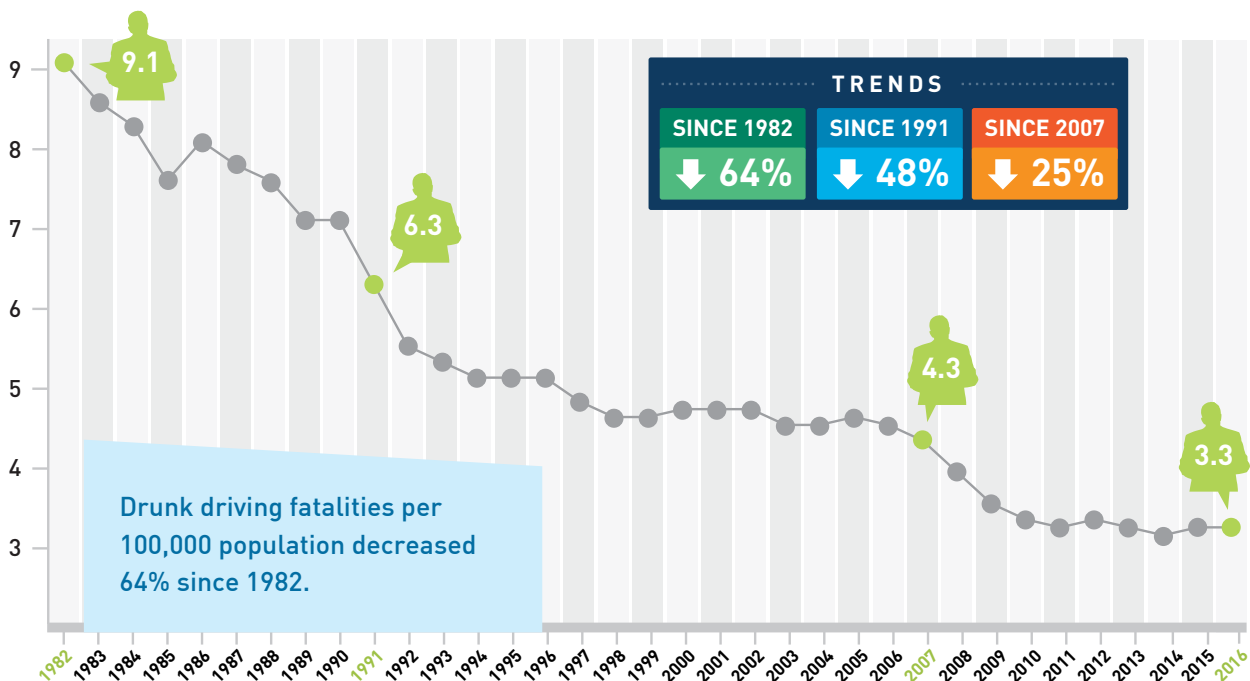


FOUNDATION FOR
ADVANCING ALCOHOL
RESPONSIBILITY

TOTAL ALCOHOL-IMPAIRED DRIVING FATALITIES



RATE OF TOTAL ALCOHOL-IMPAIRED DRIVING FATALITIES PER 100,000 POPULATION



Top Chart - Source: NHTSA/FARS, 10/17

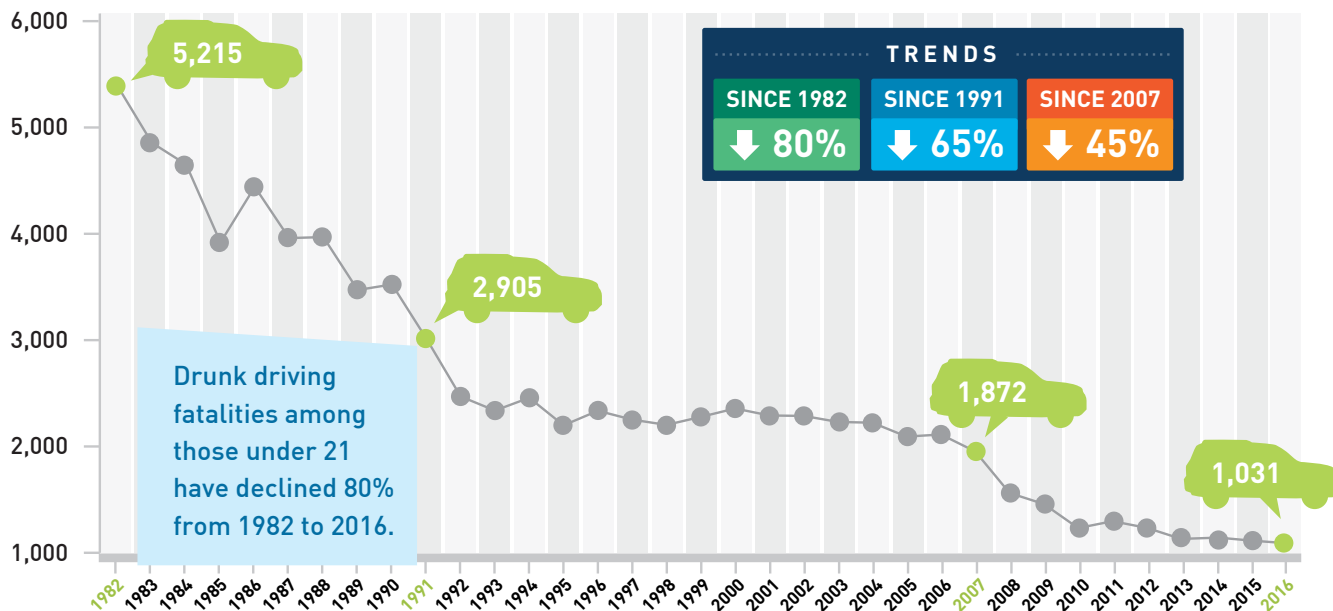
Bottom Chart - Source: NHTSA, FARS and U.S. Census Bureau, 10/17

Under 21 Alcohol-Impaired Driving Fatalities 1982-2016

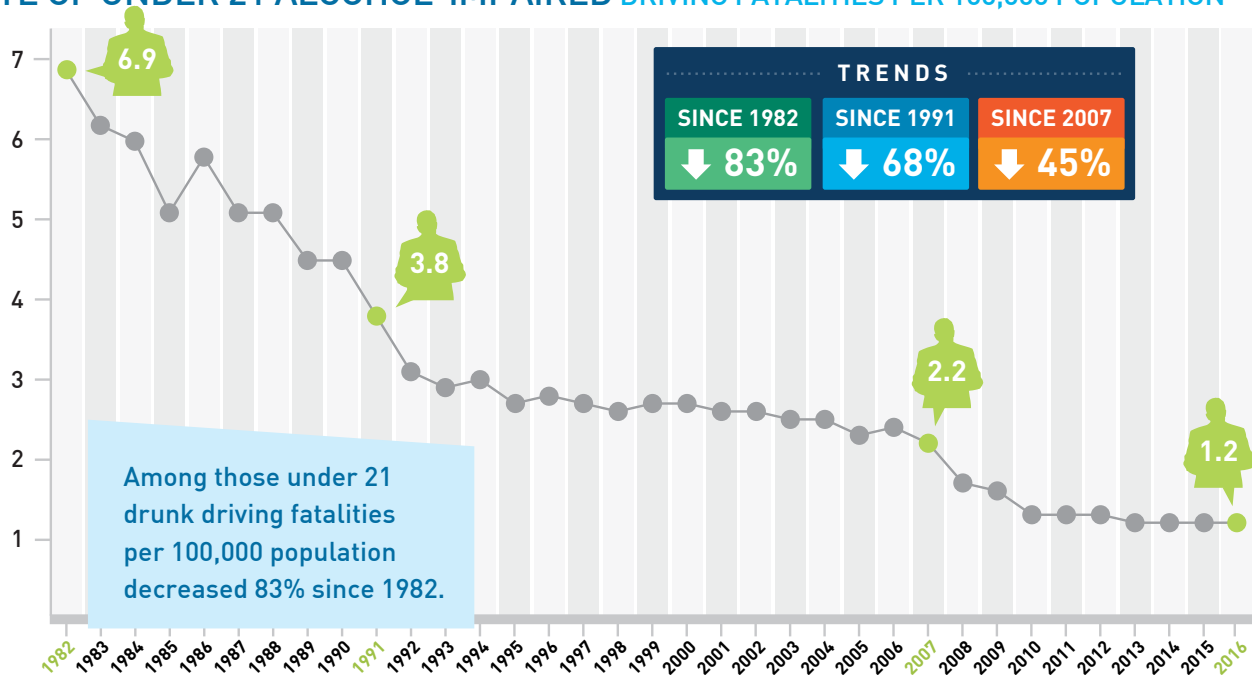


FOUNDATION FOR
ADVANCING ALCOHOL
RESPONSIBILITY

UNDER 21 ALCOHOL-IMPAIRED DRIVING FATALITIES



RATE OF UNDER 21 ALCOHOL-IMPAIRED DRIVING FATALITIES PER 100,000 POPULATION



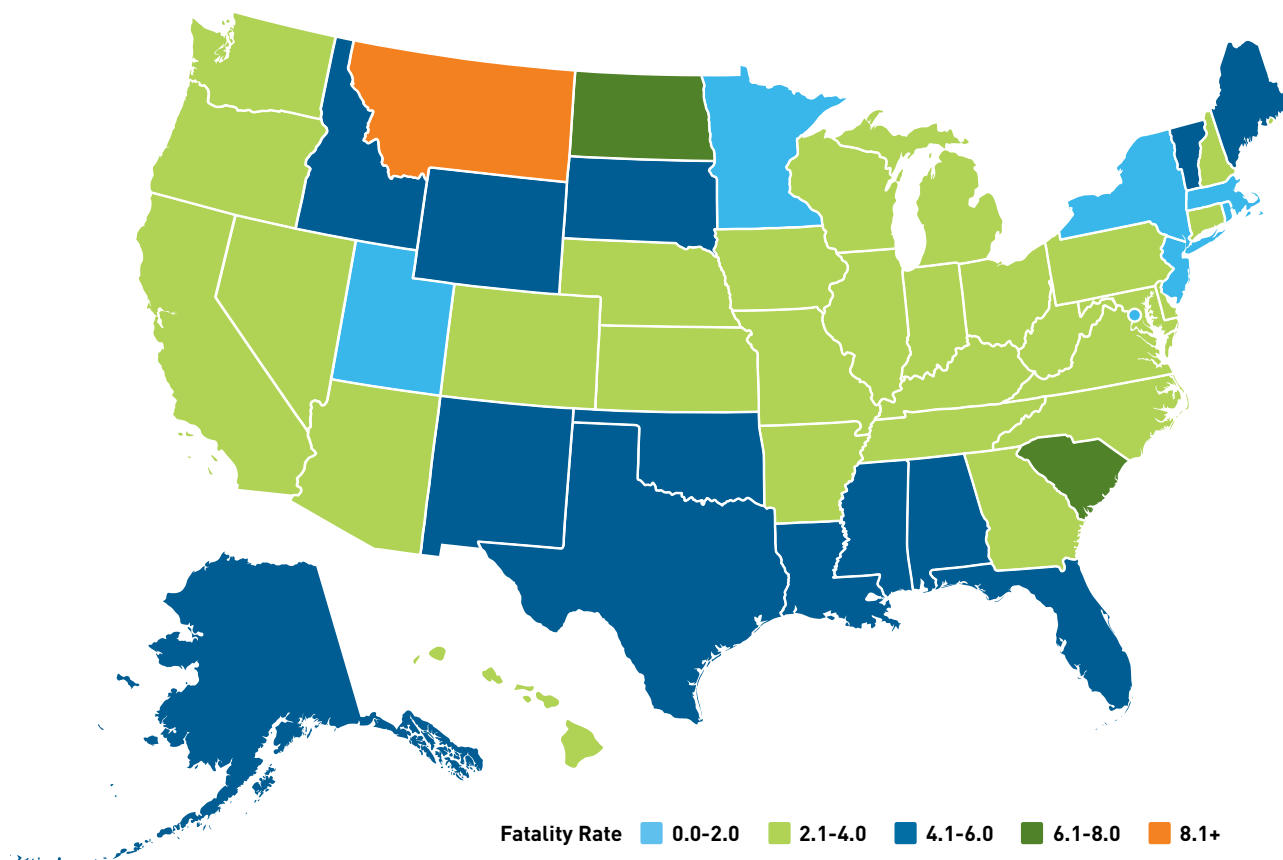
Top Chart - Source: NHTSA/FARS, 10/17

Bottom Chart - Source: NHTSA, FARS and U.S. Census Bureau, 10/17

2016 Alcohol-Impaired Driving Fatalities Per 100,000 Population by State



FOUNDATION FOR
ADVANCING ALCOHOL
RESPONSIBILITY



In 22 states and D.C., alcohol-impaired driving fatalities per 100,000 population were at or below the national average of 3.3 deaths per 100,000 population.

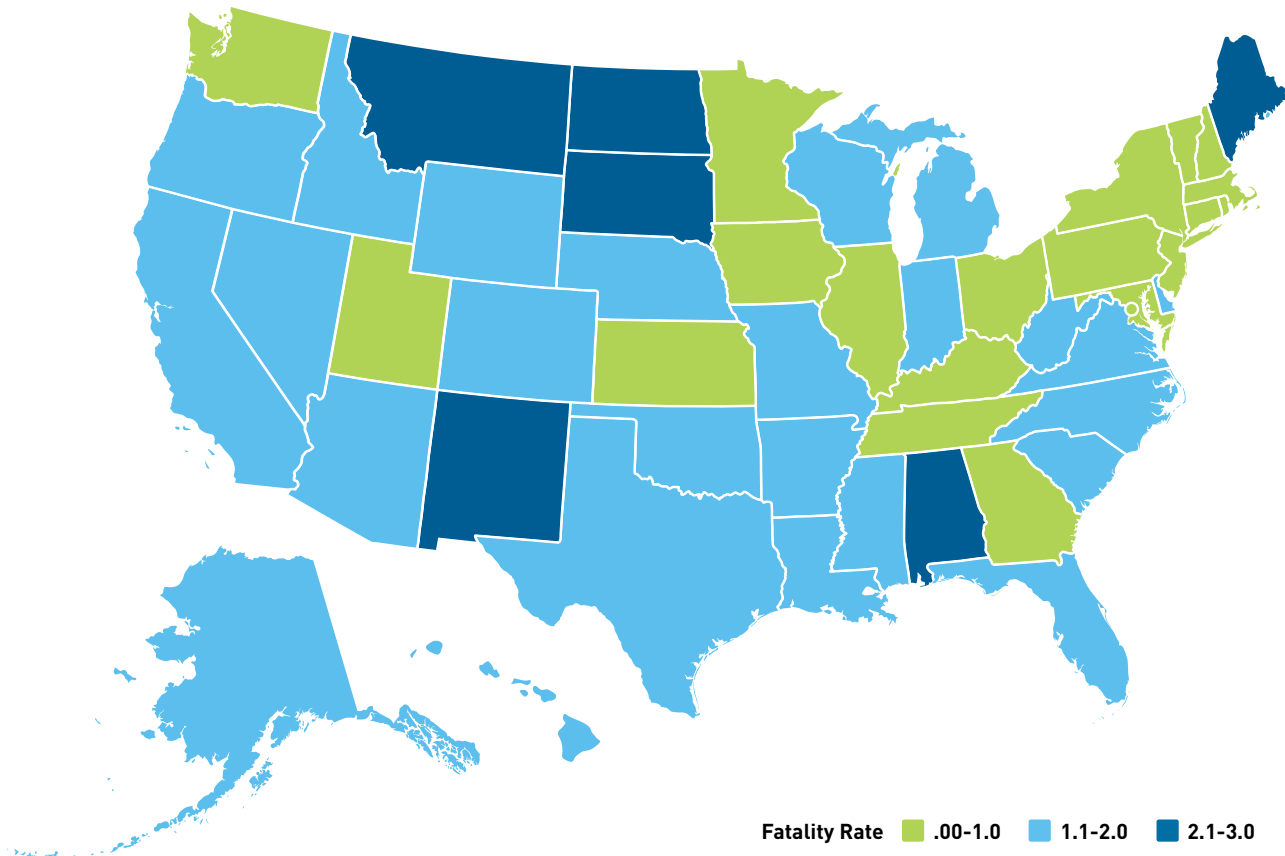
Alabama	5.8	Kentucky	4.0	Ohio	2.8
Alaska	4.2	Louisiana	4.8	Oklahoma	4.6
Arizona	3.4	Maine	4.1	Oregon	3.8
Arkansas	3.9	Maryland	2.2	Pennsylvania	2.6
California	2.7	Massachusetts	1.7	Rhode Island	1.8
Colorado	2.9	Michigan	2.4	South Carolina	6.7
Connecticut	2.8	Minnesota	1.7	South Dakota	5.3
Delaware	3.9	Mississippi	4.3	Tennessee	3.4
D.C.	1.5	Missouri	4.0	Texas	5.2
Florida	4.1	Montana	8.2	Utah	1.7
Georgia	3.6	Nebraska	3.3	Vermont	4.3
Hawaii	2.5	Nevada	3.4	Virginia	2.7
Idaho	4.6	New Hampshire	3.0	Washington	2.2
Illinois	2.5	New Jersey	1.5	West Virginia	3.7
Indiana	3.2	New Mexico	5.7	Wisconsin	3.3
Iowa	3.4	New York	1.4	Wyoming	5.5
Kansas	3.3	North Carolina	3.5	US Total	3.3
		North Dakota	6.7		

Source: NHTSA, FARS and U.S. Census Bureau, 10/17

2016 Under 21 Alcohol-Impaired Driving Fatalities Per 100,000 Population by State



FOUNDATION FOR
ADVANCING ALCOHOL
RESPONSIBILITY



In 26 states and D.C., under 21 alcohol-impaired driving fatalities per 100,000 population were at or below the national average of 1.2 deaths per 100,000 population.

Alabama	2.7	Kentucky	0.9	Ohio	0.9
Alaska	1.4	Louisiana	1.3	Oklahoma	1.3
Arizona	1.6	Maine	2.3	Oregon	1.5
Arkansas	1.2	Maryland	0.6	Pennsylvania	0.8
California	1.3	Massachusetts	1.0	Rhode Island	0.8
Colorado	1.2	Michigan	1.2	South Carolina	1.8
Connecticut	0.9	Minnesota	0.3	South Dakota	2.8
Delaware	1.7	Mississippi	1.8	Tennessee	0.6
D.C.	0.0	Missouri	1.7	Texas	1.9
Florida	1.6	Montana	3.0	Utah	0.5
Georgia	1.0	Nebraska	1.3	Vermont	0.7
Hawaii	1.4	Nevada	1.2	Virginia	1.1
Idaho	1.4	New Hampshire	0.6	Washington	0.7
Illinois	0.7	New Jersey	0.3	West Virginia	1.1
Indiana	1.1	New Mexico	2.6	Wisconsin	1.3
Iowa	0.8	New York	0.6	Wyoming	1.9
Kansas	0.8	North Carolina	1.5	US Total	1.2
		North Dakota	2.4		

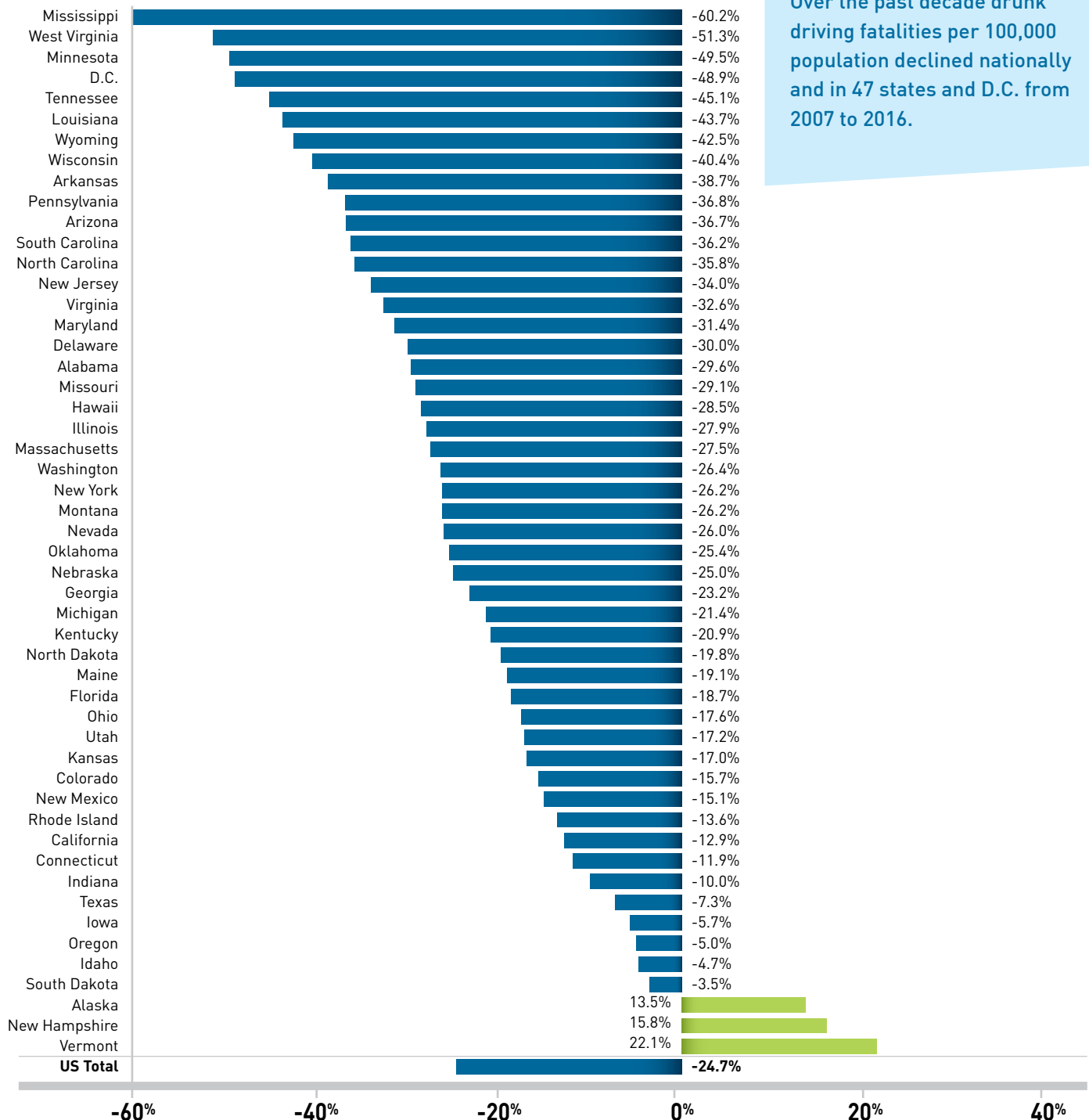
Source: NHTSA, FARS and U.S. Census Bureau, 10/17

Percent Change in Drunk Driving Fatality Rates from 2007 to 2016 by State Rank



FOUNDATION FOR
ADVANCING ALCOHOL
RESPONSIBILITY

Over the past decade drunk driving fatalities per 100,000 population declined nationally and in 47 states and D.C. from 2007 to 2016.



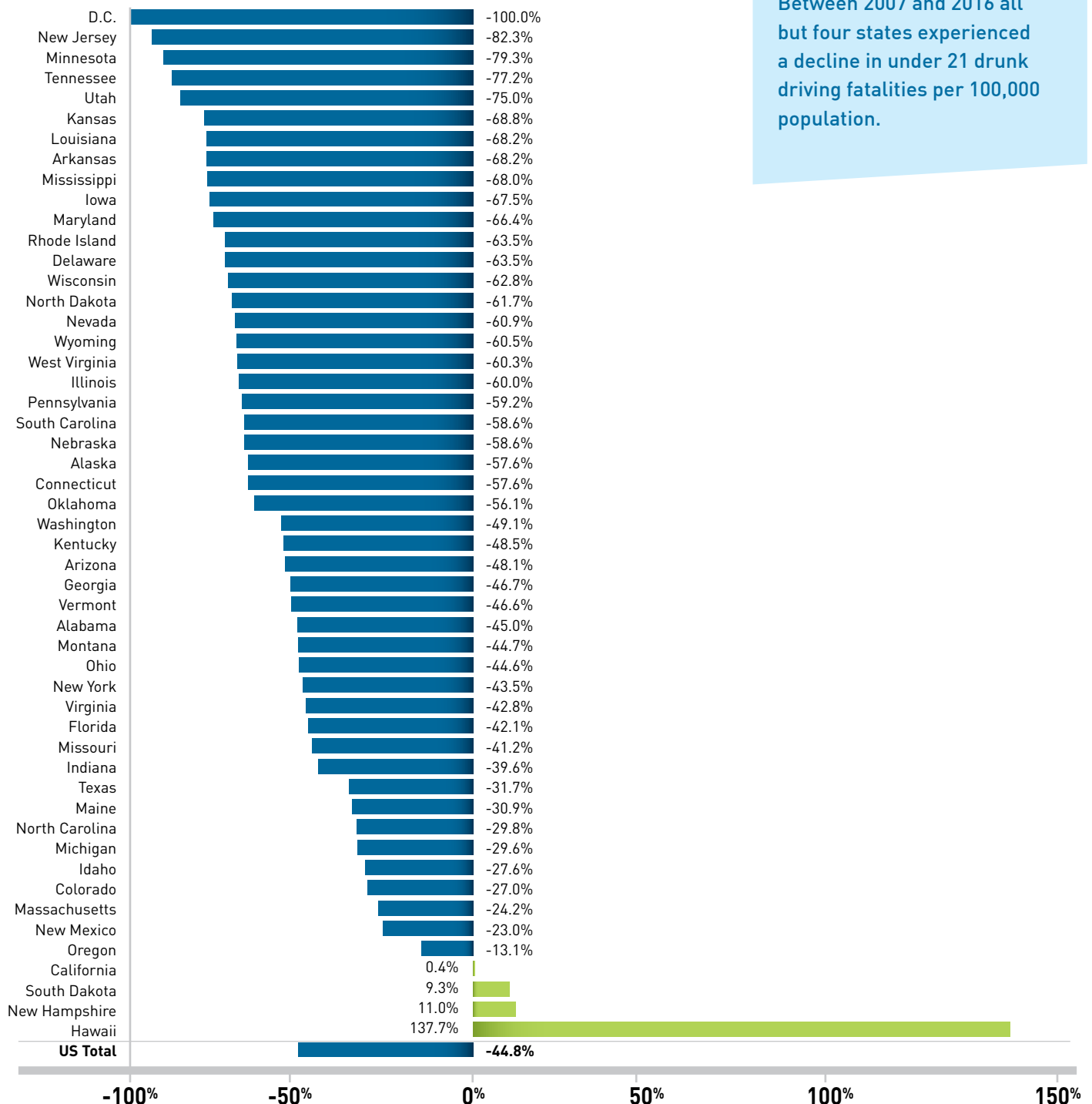
Source: NHTSA, FARS and U.S. Census Bureau, 10/17

Percent Change in Under 21 Drunk Driving Fatality Rates from 2007 to 2016 by State Rank



FOUNDATION FOR
ADVANCING ALCOHOL
RESPONSIBILITY

Between 2007 and 2016 all but four states experienced a decline in under 21 drunk driving fatalities per 100,000 population.

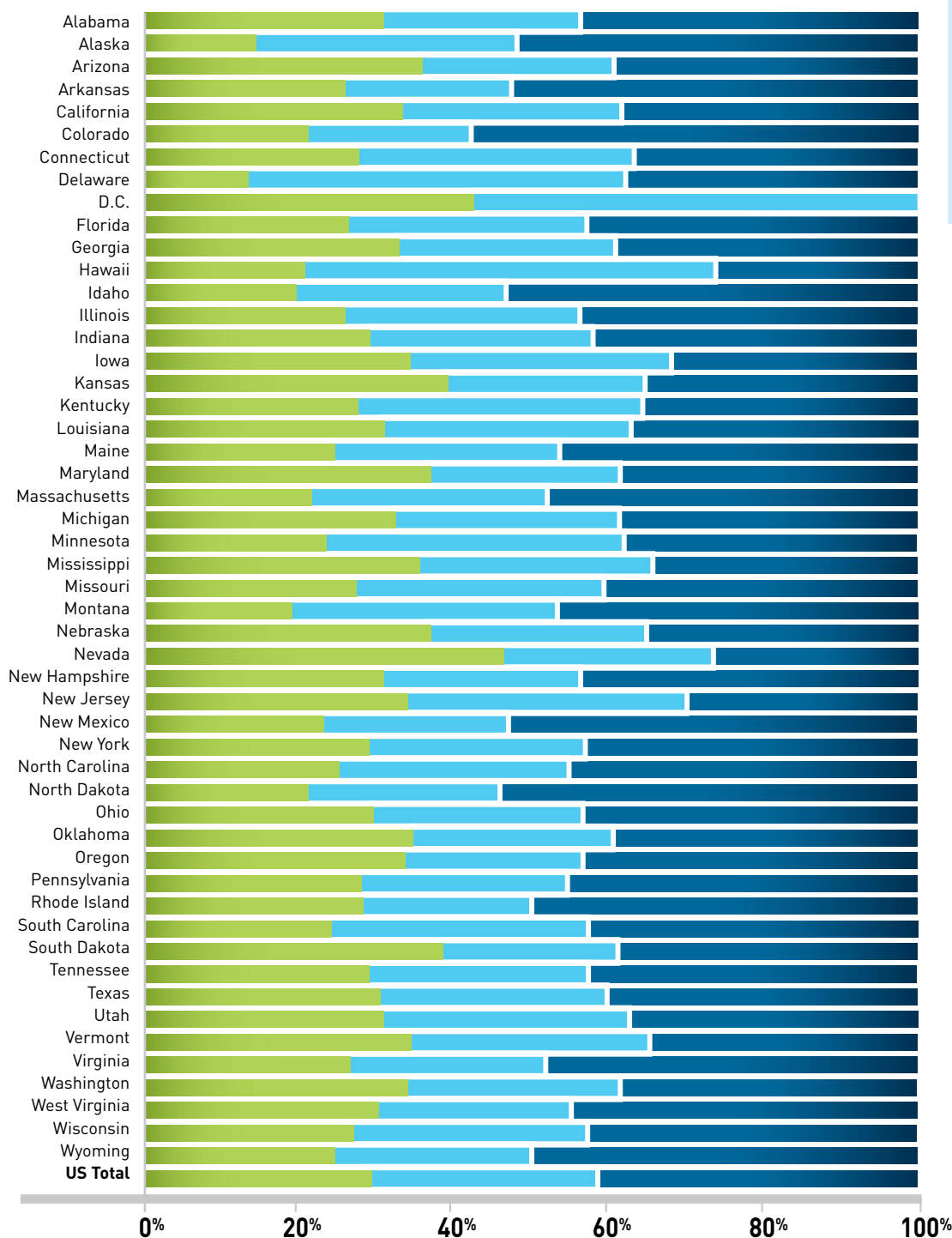


Source: NHTSA, FARS and U.S. Census Bureau, 10/17

2016 Fatal Drunk Driving Crashes Among Drivers with a Known BAC



FOUNDATION FOR
ADVANCING ALCOHOL
RESPONSIBILITY



Seven out of 10 drivers involved in fatal drunk driving crashes had a BAC level of .15 or higher.

Percent of Alcohol-Impaired Driving Fatalities by BAC

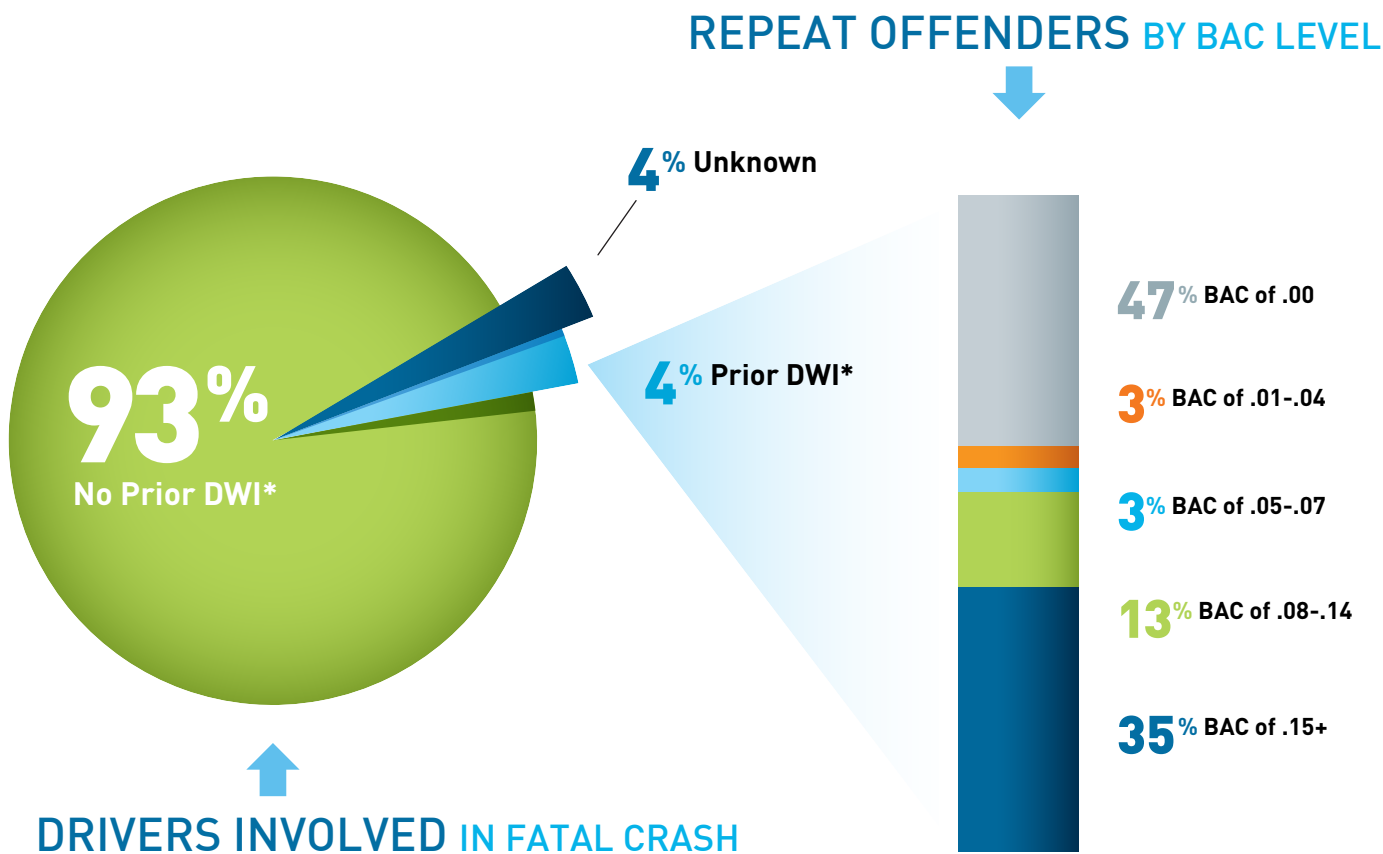
Source: NHTSA, FARS ARF of Drivers with Known BAC, 10/17

Repeat Offenders Involvement in Fatal Crashes



FOUNDATION FOR
ADVANCING ALCOHOL
RESPONSIBILITY

One third of drivers involved in a fatal crash who had a prior DWI* in the past five years had a high BAC at the time of the crash.



Source: NHTSA, FARS, 10/17

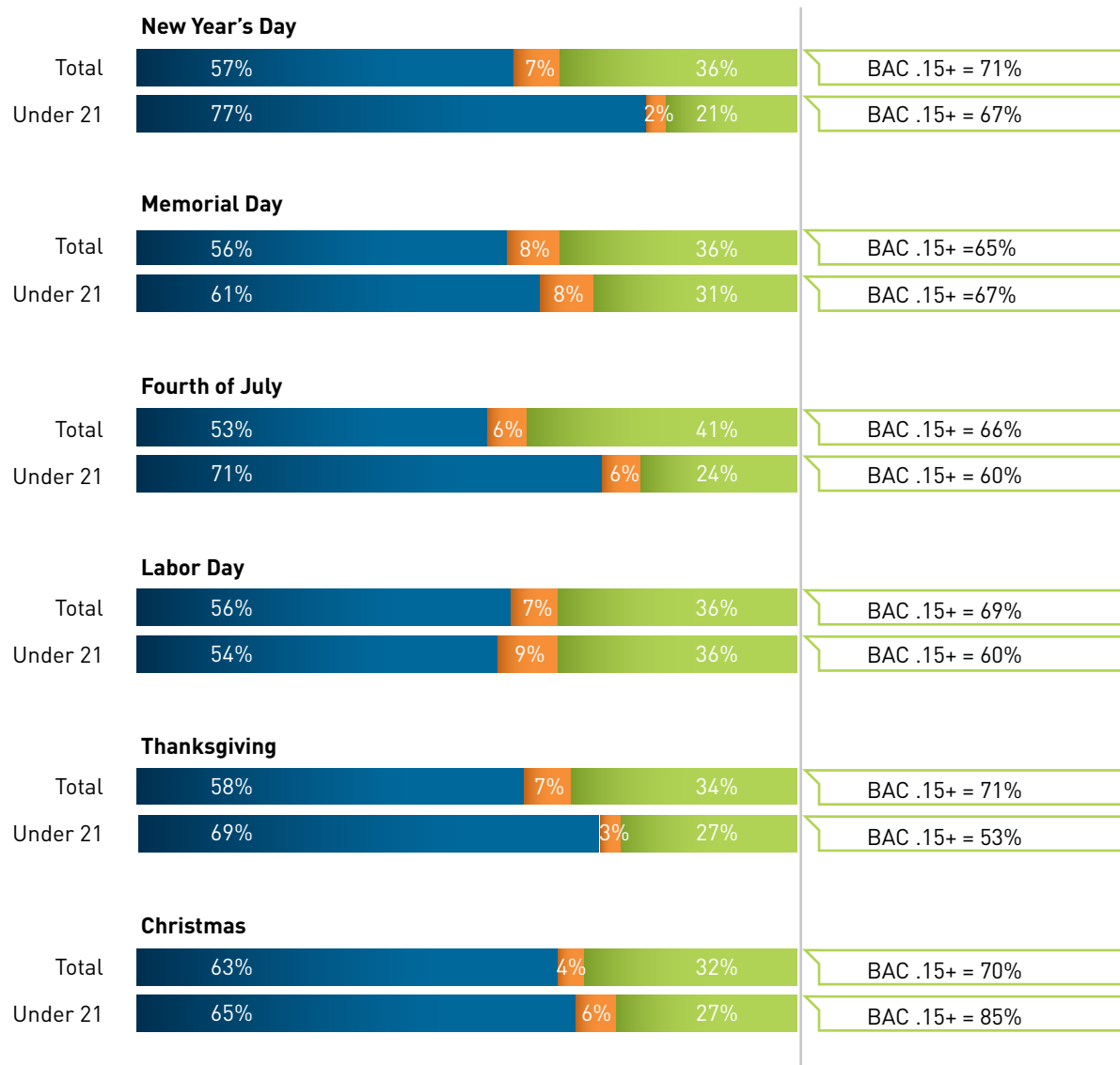
* Prior convictions only for events occurring within 5 years from date of crash. Total may not equal sum of categories due to rounding.

Holiday Traffic Fatalities by BAC Level



FOUNDATION FOR
ADVANCING ALCOHOL
RESPONSIBILITY

Drunk driving fatalities accounted for 36% of traffic fatalities during the 2016 holidays and drivers with a high BAC were involved in 68% of drunk driving fatalities.



BAC Level ■ .00 ■ .01-.07 ■ .08+

Source: NHTSA, FARS, 10/17

The number of whole days in the holiday period depends on the day on which the legal holiday falls. Typically, the period is 6 p.m. the night before until 5:59 a.m. the day after the holiday. Total may not equal sum of categories due to rounding.



Alcohol-Impaired Fatality

Drivers in all 50 states and D.C. are considered to be alcohol-impaired if their blood alcohol concentration (BAC) is .08 grams per deciliter (g/dL) or higher. Any fatality occurring in a crash involving at least one driver, or motorcycle operator, with a BAC of .08 or higher is considered to be an alcohol-impaired driving, or drunk driving, fatality. The term alcohol-impaired does not indicate that a crash or a fatality was the result of alcohol impairment. In producing national and state alcohol-impaired statistics, the National Highway Traffic Safety Administration (NHTSA) estimates the extent of alcohol involvement when alcohol test results are unknown.

Alcohol-Involved Fatality

Alcohol-involved fatalities are those where at least one driver, or motorcycle operator, has a positive BAC of .01 or higher. In producing national and state alcohol-involved statistics, NHTSA estimates the extent of alcohol involvement when alcohol test results are unknown.

Blood Alcohol Concentration (BAC)


BAC is measured in grams of alcohol per 100 milliliters of blood. A BAC of .01 indicates .01 grams of alcohol per 100 milliliters of blood. As of July 2004, all 50 states and D.C. have passed legislation establishing a driver with a BAC of .08 to be legally intoxicated. Additionally, 48 states and D.C. have laws that increase penalties for those convicted of driving with elevated or "high" BAC levels.

Rates per 100,000 Population

The rate of alcohol-impaired fatalities per 100,000 population is the number of alcohol-impaired fatalities for every 100,000 persons in the population being measured. For example, an alcohol-impaired fatality rate of 3.3 per 100,000 population nationally means that for every 100,000 people in the nation, there were approximately three alcohol-impaired fatalities.

Repeat Offenders

The NHTSA/FARS data records prior driving records (convictions only, not violations) for driving while intoxicated events occurring within five years of the date of the crash. The same driver can have one or more of these convictions during this five year period. Drivers who have a prior conviction in this five year period are reported as repeat offenders.



The information presented in this report is drawn from several databases maintained by government agencies, including the National Center for Statistics and Analysis (NCSA) of NHTSA, which compiles crash data from the Fatality Analysis Reporting System (FARS), and the U.S. Census Bureau of the U.S. Department of Commerce. This report reflects data from 1982 to the present utilizing NHTSA's multiple imputation method for estimating missing information about BAC levels for persons involved in fatal crashes, thus allowing for improved reporting of alcohol involvement statistics at any BAC level. The U.S. Census Bureau publishes state resident population estimates which were used in this report.



FOUNDATION FOR
ADVANCING ALCOHOL
RESPONSIBILITY



responsibility.org/blog



twitter.com/goFAAR



facebook.com/goFAAR



youtube.com/goFAAR



instagram.com/go_FAAR



flickr.com/goFAAR



pinterest.com/goFAAR



responsibility.org/get-the-facts



BACARDI U.S.A., INC.

Beam SUNTORY



BROWN-FORMAN



Constellation Brands

DIAGEO



EDRINGTON



Jägermeister
MAST-JÄGERMEISTER US



Pernod Ricard USA

2345 Crystal Drive
Suite 710
Arlington, VA 22202
202-637-0077

RESPONSIBILITY.ORG