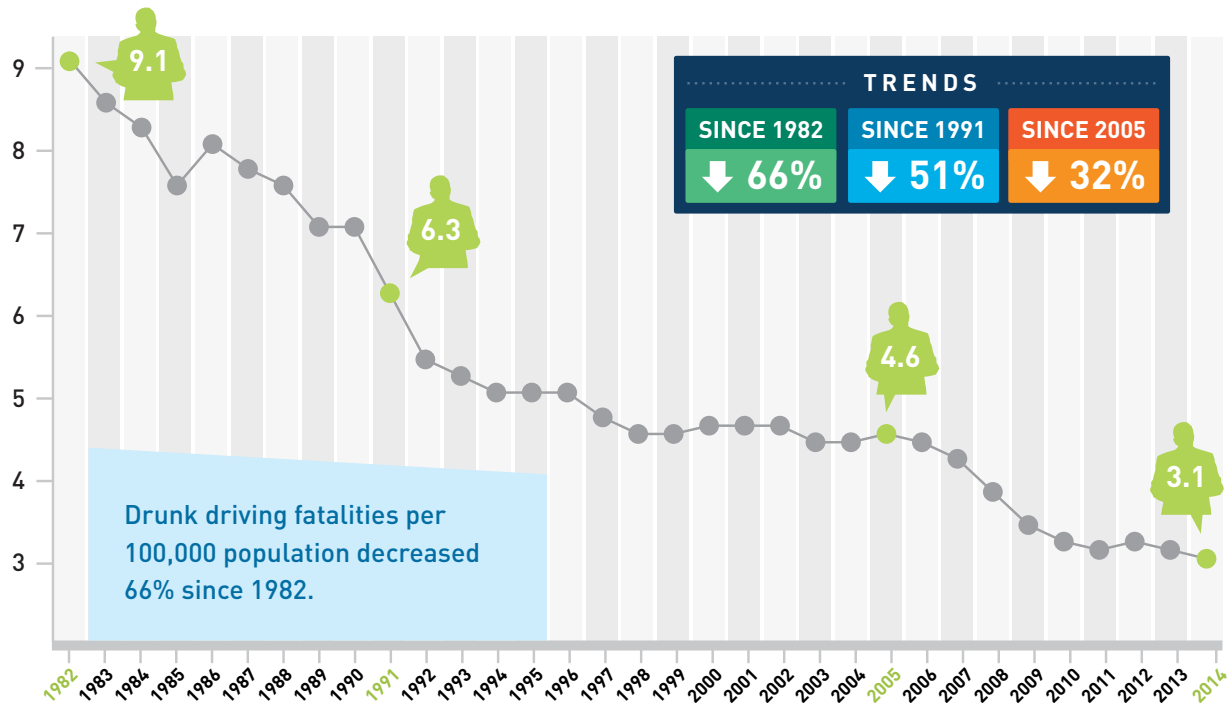


# Alcohol-Impaired Driving Fatalities 1982-2014

Learn more at

[Responsibility.org](http://Responsibility.org)

## RATE OF TOTAL ALCOHOL-IMPAIRED DRIVING FATALITIES PER 100,000 POPULATION



Top Chart - Source: NHTSA/FARS, 12/15

Bottom Chart - Source: NHTSA, FARS and U.S. Census Bureau, 12/15



FOUNDATION FOR  
ADVANCING ALCOHOL  
RESPONSIBILITY

Offering  
**PROVEN STRATEGIES to STOP IMPAIRED DRIVING**