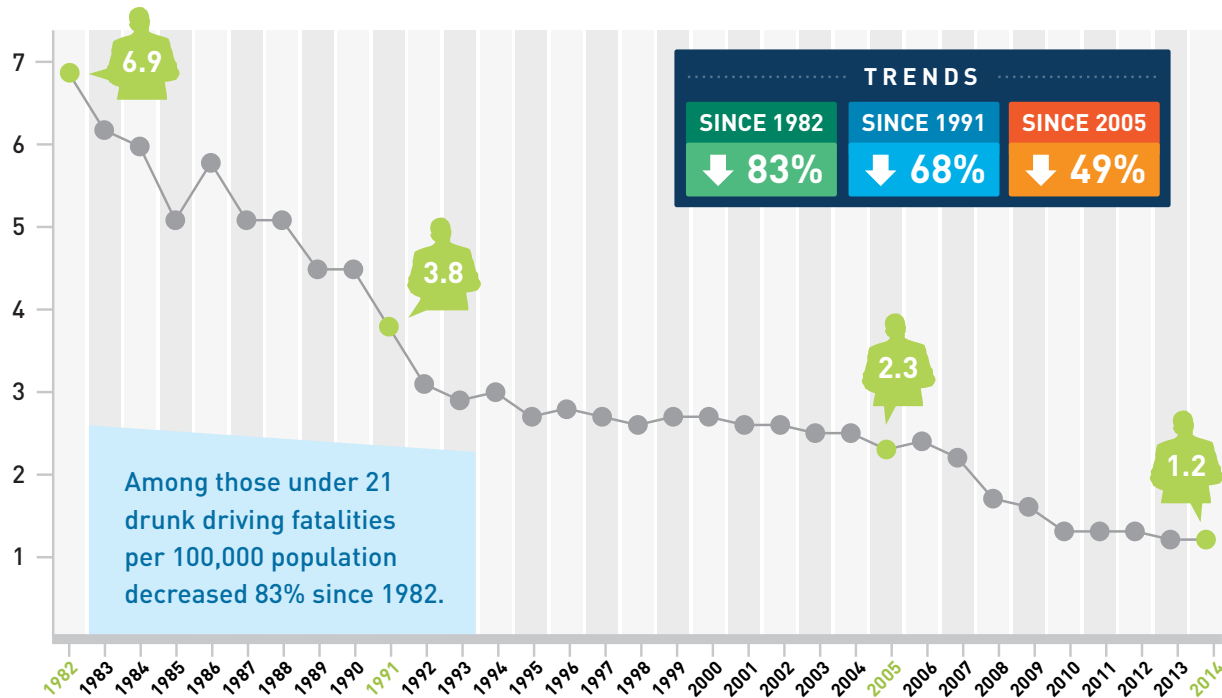


Alcohol-Impaired Driving Fatalities 1982-2014

Learn more at

Responsibility.org

RATE OF UNDER 21 ALCOHOL-IMPAIRED DRIVING FATALITIES PER 100,000 POPULATION



Top Chart - Source: NHTSA/FARS, 12/15

Bottom Chart - Source: NHTSA, FARS and U.S. Census Bureau, 12/15



FOUNDATION FOR
ADVANCING ALCOHOL
RESPONSIBILITY

Offering
PROVEN STRATEGIES to STOP IMPAIRED DRIVING